

PS4型電源開關系列 Power switch series

◆ 特點和用途 Characteristics and usage

- 具有快速動作的特點
Quick action
- 可承受大電流和浪涌電流
Endure big current and inrush current
- 通過UL、VDE等國際安全認證
UL, VDE approvals
- 廣泛應用於電視機、音頻裝置、計算機及外圍設備等。
Widely used in color TV, audio device, computer and its peripheral equipment etc.



◆ 技術特性 Specifications

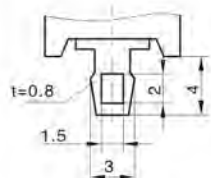
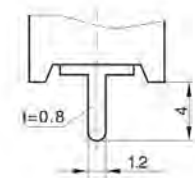
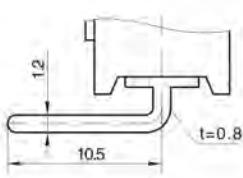
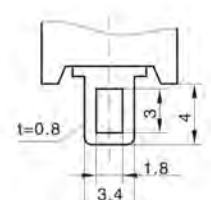
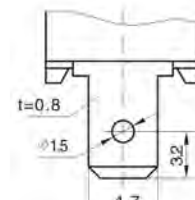
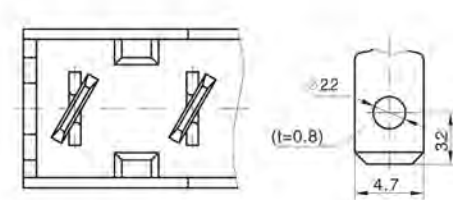
項目 Item		特性值 Value
環境溫度 Environment temperature		-10 ~ +85°C
相對濕度 Relative humidity		95%, 40°C
額定電流 Rated current		8A/128A
額定電壓 Rated voltage		AC250V
工作行程/全行程 Operating travel/full travel		2.5mm/3.5mm
動作力 Operating force		2 ~ 6N
電路 Circuit		單刀單擲 SPST
絕緣電阻 Insulation resistance		≥100MΩ
接觸電阻 Contact resistance		≤50mΩ
耐電壓 Test voltage	同極不相接端子間 Between each terminals of the same polarity	AC2000V
	帶電金屬零件與地(外殼)之間、接線端與不帶電金屬件之間 Between current-carrying metal parts and ground(case), and between each terminal and non-current-carrying metal parts.	AC4000V
電氣壽命 Electrical life		10,000次/cycles
質量 Weight		約 7.8 g Approx. 7.8g
安全認證 Safety approvals		UL、CUL、VDE、SEMKO、DEMKO、NEMKO、FIMKO、CE、EK、CQC

◆ 型號規格命名及含義 Model number legend and meanings

 PS4-□□□□□
 1 2 3 4 5

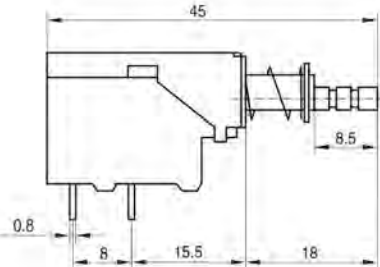
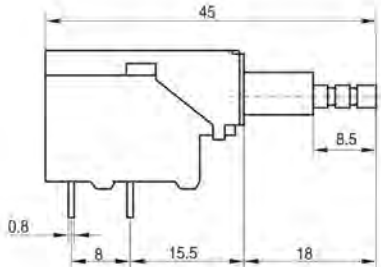
1 外形特徵 Outline features	A: 外彈簧形 Out side spring B: 內彈簧形 Inside spring (見說明圖 see illustration)	4 蓋板形狀特徵 Frame tab shape features	0: 無支腳 No frame tab 1: 支腳尺寸2.6 Frame tab dimension 2.6 2: 支腳尺寸5 Frame tab dimension 5 3: 支腳尺寸6.8 Frame tab dimension 6.8 4: 右側臥 Right lain 5: 左側臥 Left lain
2 端子類型 Terminal types	1: 焊接端子(孔1.5×2) Solder terminal(hole 1.5×2) 2: PCB端子 PCB terminal 4: 側面PCB端子 Side PCB terminal 5: 焊接端子(孔1.8×3) Solder terminal(hole 1.8×3) 6: 快接端子#187 Quick-connect terminal#187 7: 快接端子#187, 扭轉45° Quick-connect terminal#187, torsion 45° (見說明圖 see illustration)	5 附加代號 Additional code	用A、B、C……表示與基本型有 差異或有特殊要求(如無鎖開關 用W表示) A,B,C……indicate different or special requirements with basic type(if not lockswitch indicate with W)
3 安裝孔類型 Mounting hole types	0: 無安裝孔 No mounting hole 1: 螺孔M3 Screw hole M3 2: 光孔Φ3.2 HoleΦ3.2		

◆ 接線端尺寸 Terminal dimensions

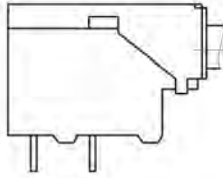
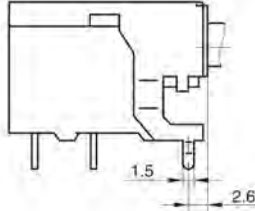
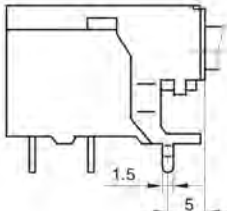
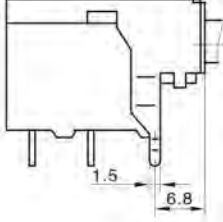
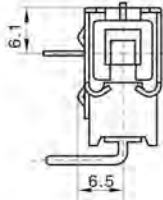
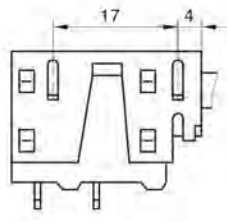
端子種類 Terminal types	1		2		4	
端子尺寸 Terminal dimensions						
端子種類 Terminal types	5		6		7	
端子尺寸 Terminal dimensions						

PS4

◆ 外形特徵圖 Outline characteristic drawing

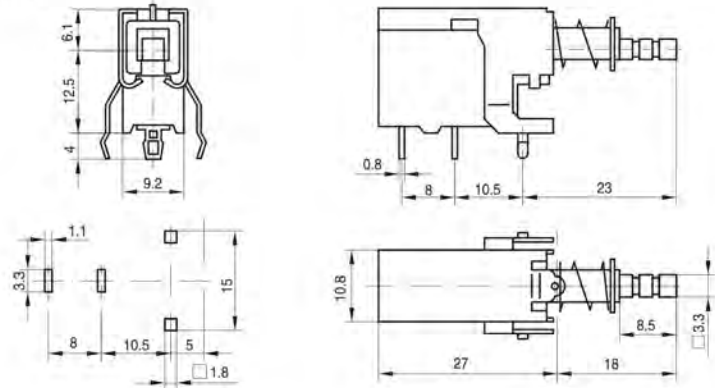
外形特徵A Outline characteristic/A	外形特徵B Outline characteristic/B
	

◆ 蓋板特徵圖 Frame tab characteristic drawing

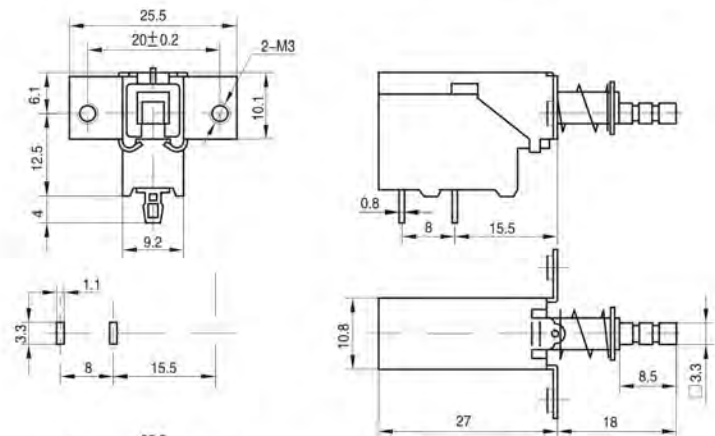
蓋板特徵號 Frame tab characteristic code	0	1	2
蓋板特徵 Frame tab characteristic			
蓋板特徵號 Frame tab characteristic code	3	5	
蓋板特徵 Frame tab characteristic			

◆ 外形和安装尺寸 Outline and mounting dimensions

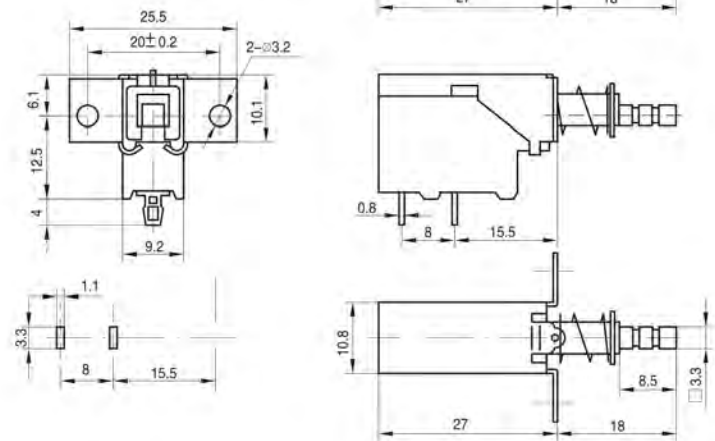
PS4-A102



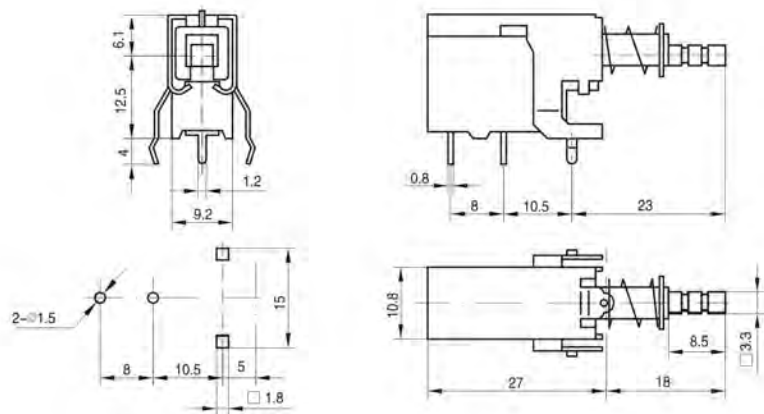
PS4-A110

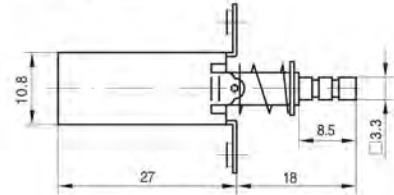
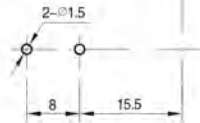
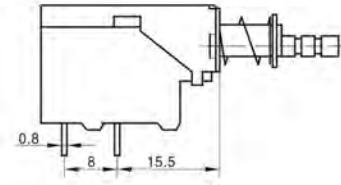
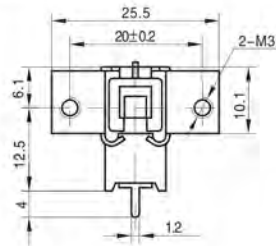
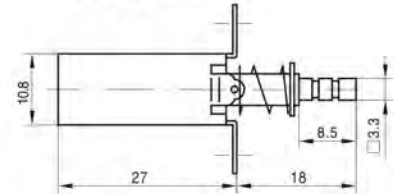
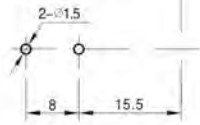
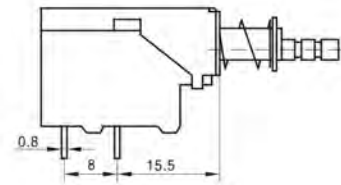
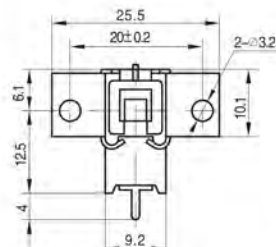
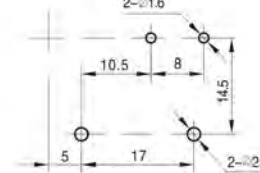
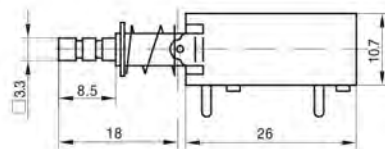
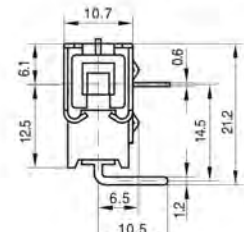
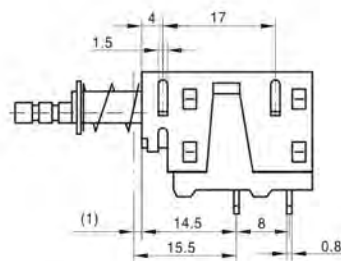
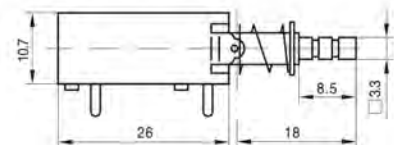
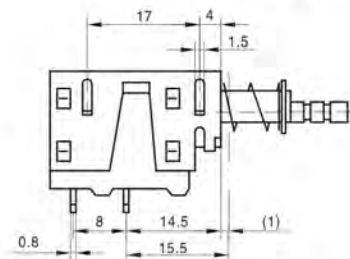
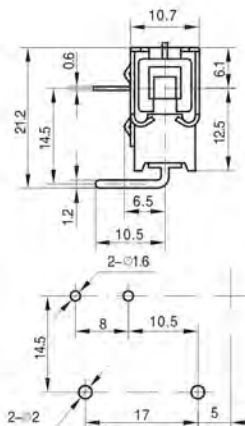


PS4-A120

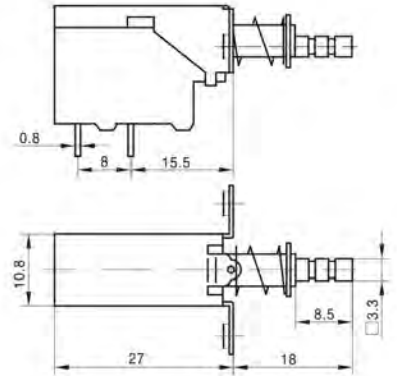
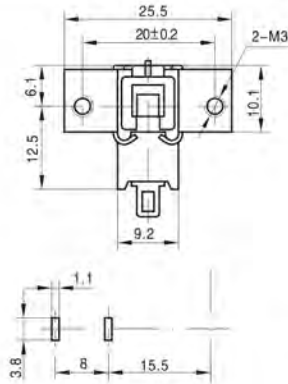


PS4-A202

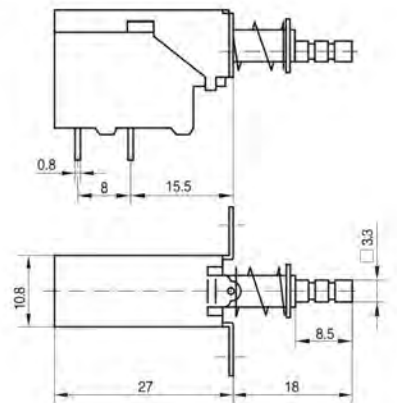
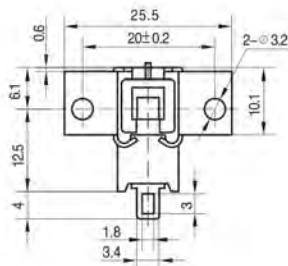


PS4-A210

PS4-A220

PS4-A404

PS4
PS4-A405


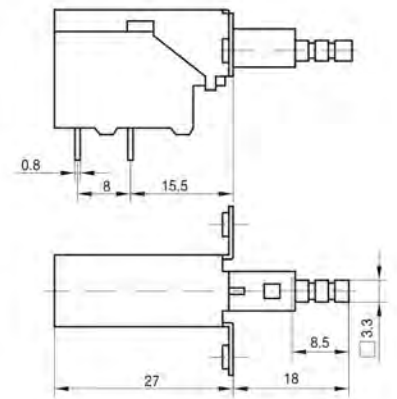
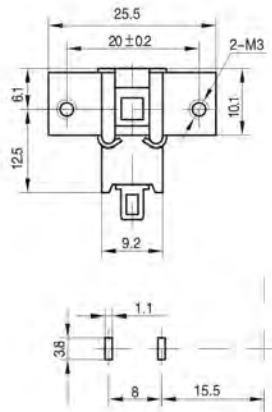
PS4-A510



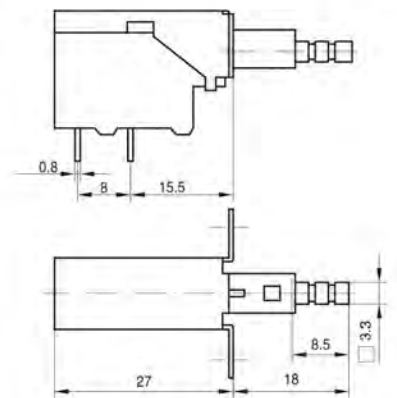
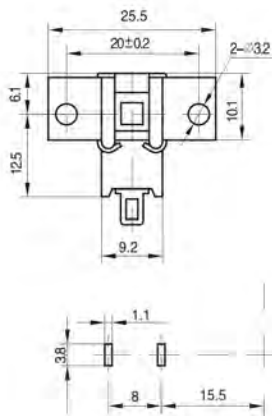
PS4-A520



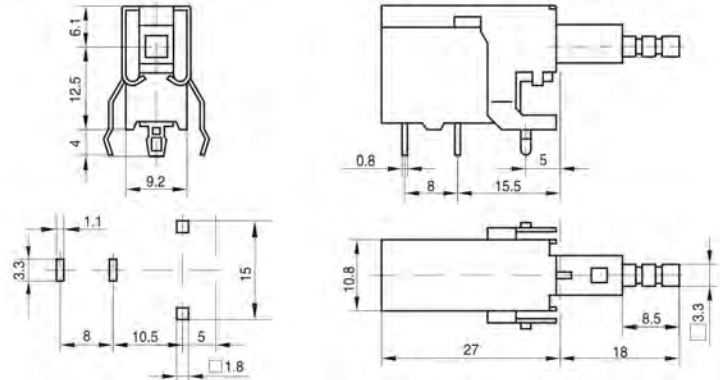
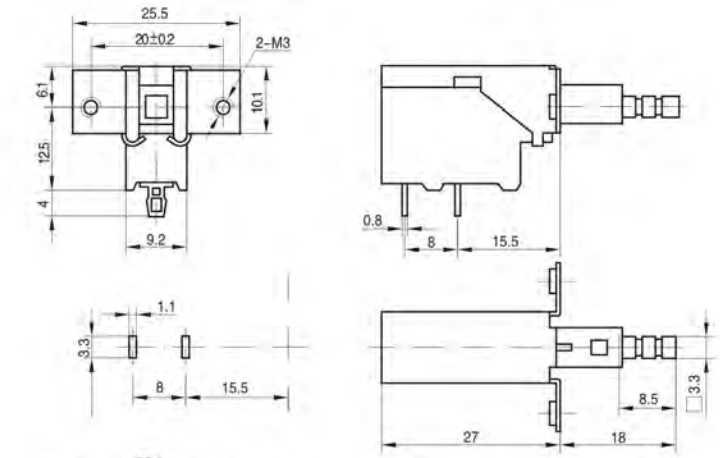
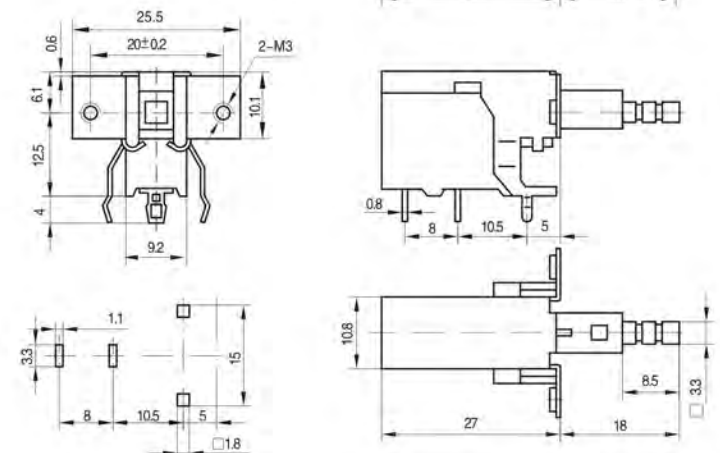
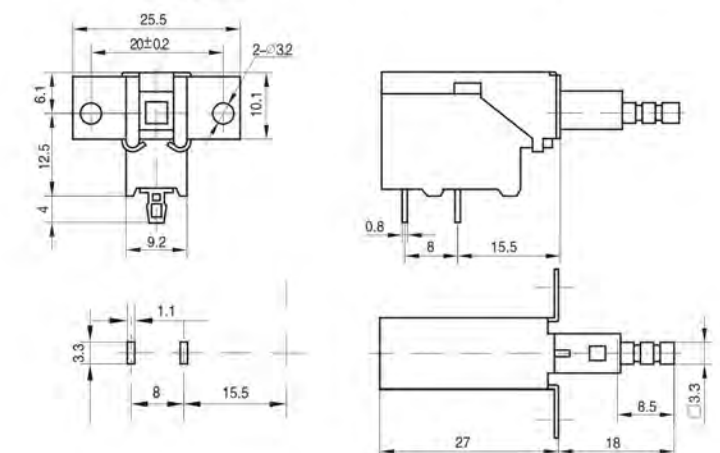
PS4-B510



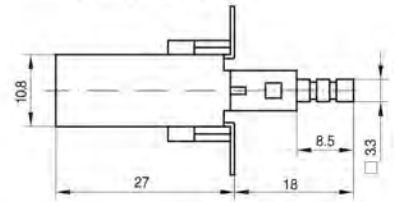
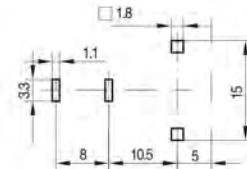
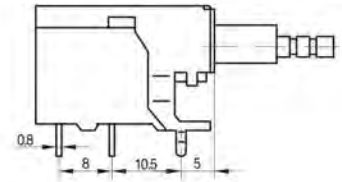
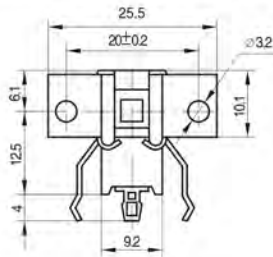
PS4-B520



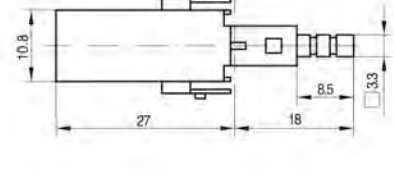
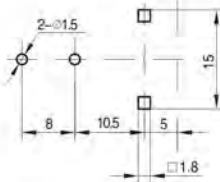
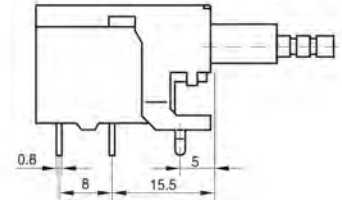
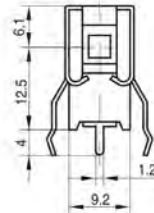
PS4

PS4-B102

PS4-B110

PS4-B112

PS4-B120

PS4

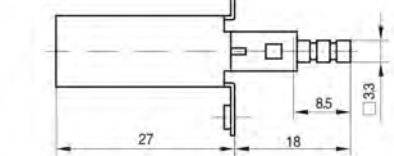
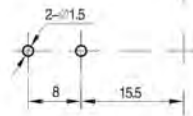
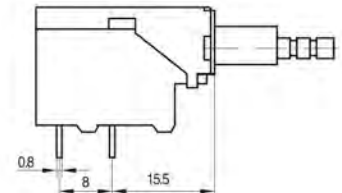
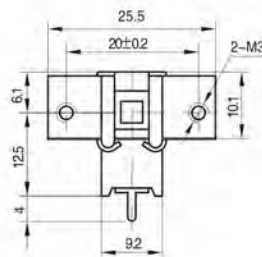
PS4-B122



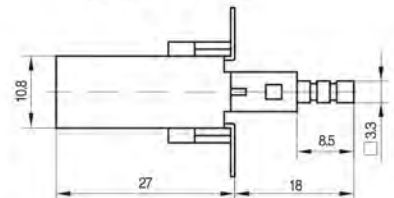
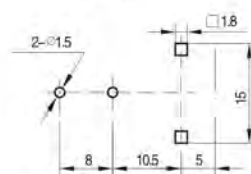
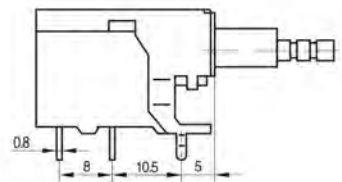
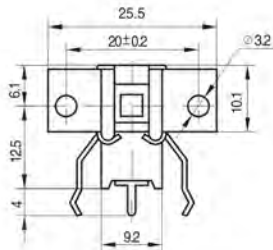
PS4-B202



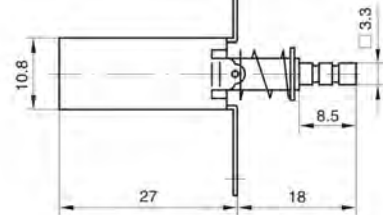
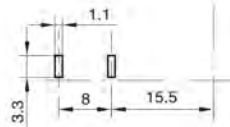
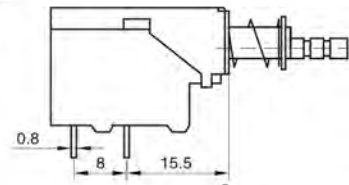
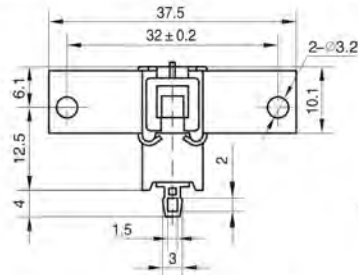
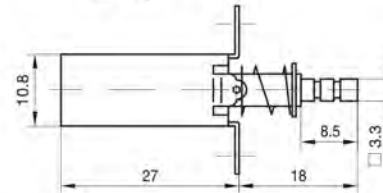
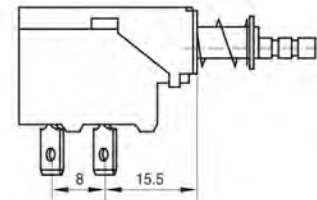
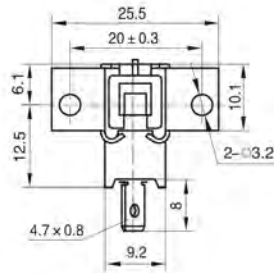
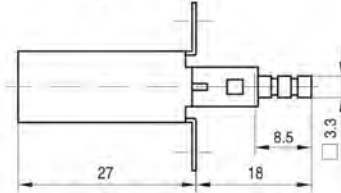
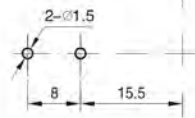
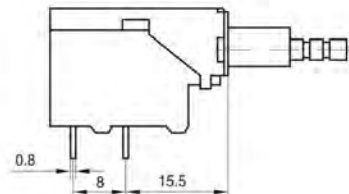
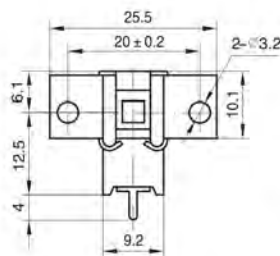
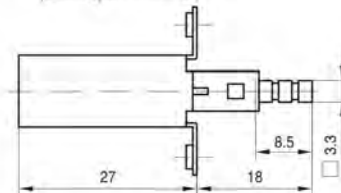
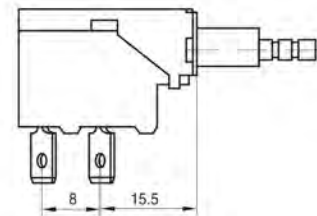
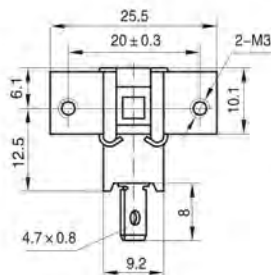
PS4-B210



PS4-B222



PS4

PS4-A120A

PS4-A720

PS4-B220

PS4-B710

PS4