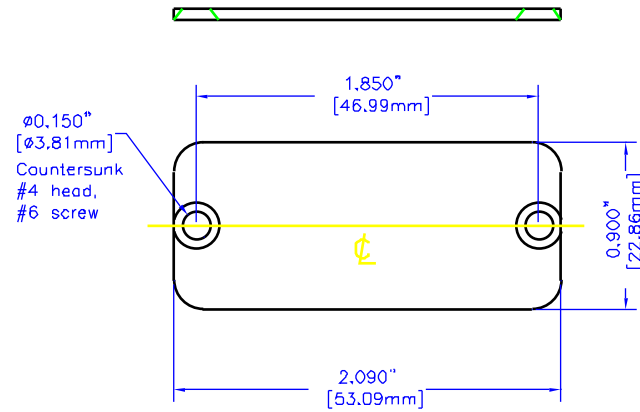
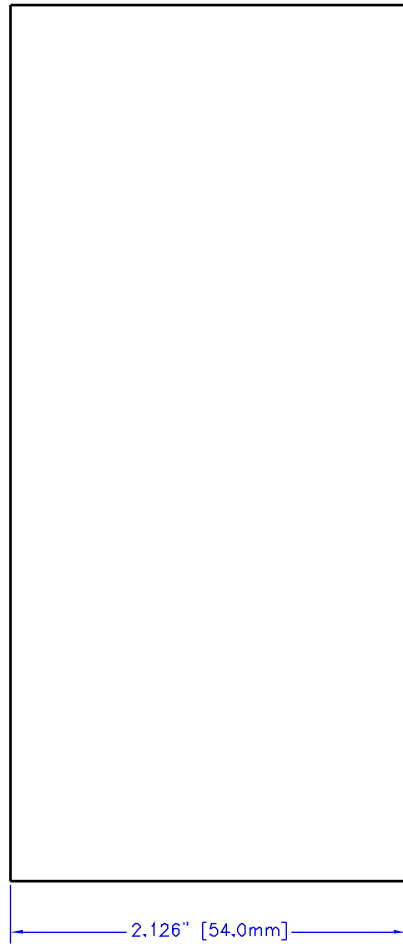
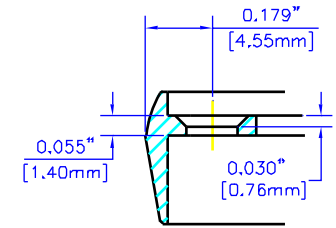


NOTES

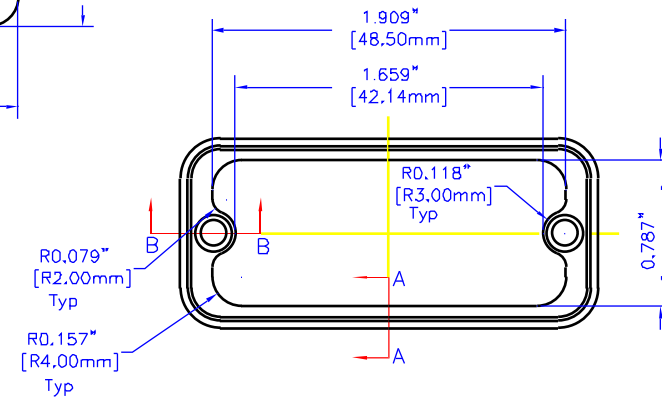
Constructed from extruded Al with a minimum thickness of 0,06"(1,5mm)
 Available in clear or Black anodized finish
 Version 1 includes two Al end panels, and two Black plastic bezels.
 Hardware and self-adhesive rubber feet included.



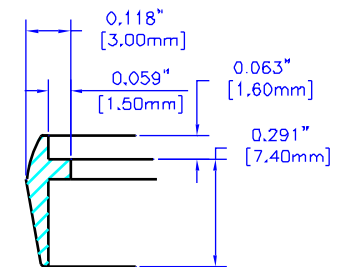
PANELS



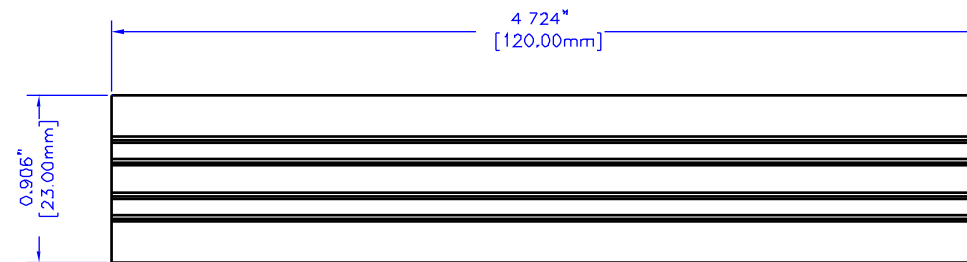
SECTION B-B
SCALE 2:1



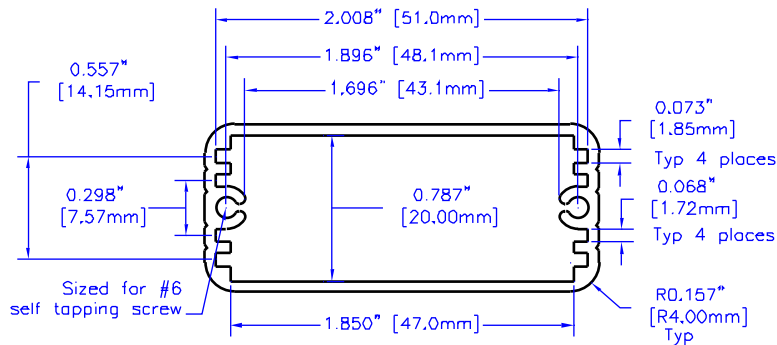
BEZELS



SECTION A-A
SCALE 2:1



EXTRUSION



Sized for #6 self tapping screw

For the best fit print on legal size paper

THIS DRAWING IS PROPRIETARY INFORMATION OF HAMMOND MFG.CO.LTD. NOT TO BE USED WITHOUT EXPRESSED WRITTEN PERMISSION OF HAMMOND MFG.CO.LTD.

△	N/A	ADDED BEZELS AND PANELS TO DWG	----	02 06 02	MJM
△	N/A	RELEASE	----	01 15 02	MJM
Rev	ECN	Description		Date	By

Unless otherwise specified dimensions are in inches
Tolerances are:

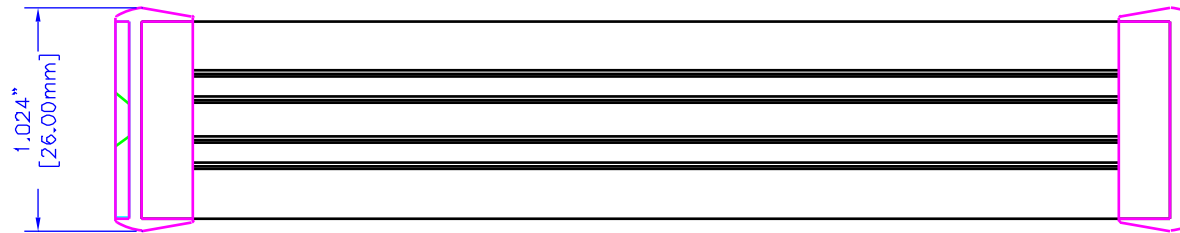
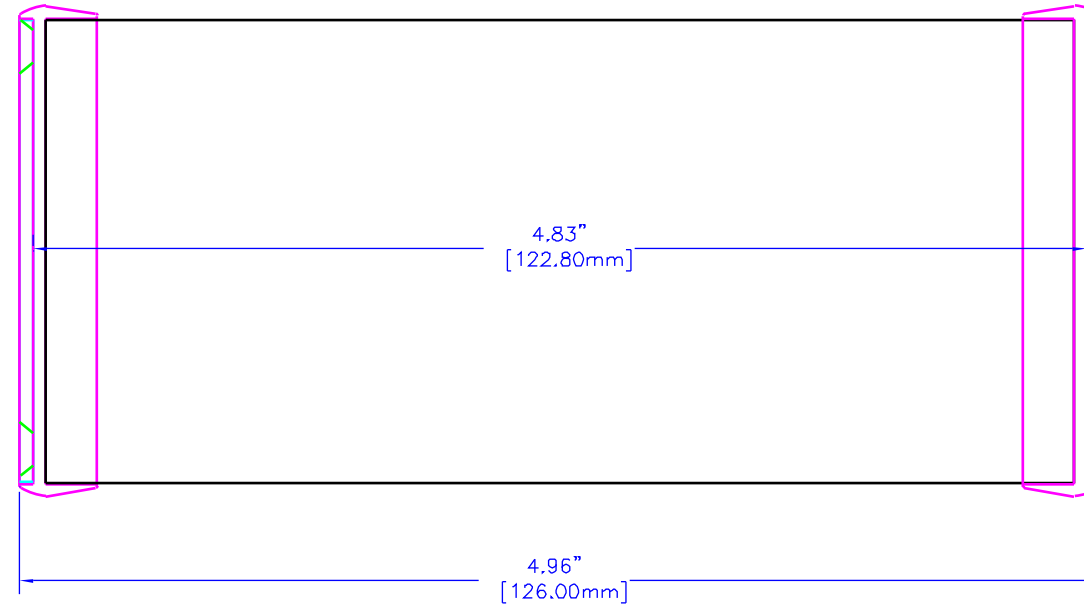
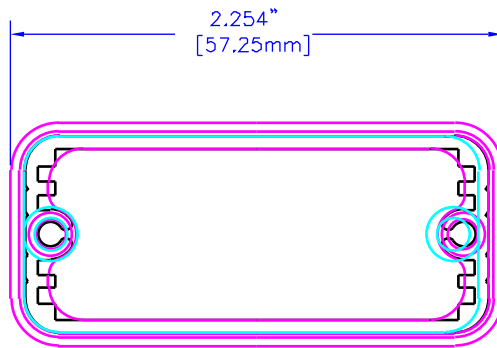
.X	± .1
.XX	± .04
.XXX	± .020
.XXXX	± .0050
Holes	± .0050
Angles	± .5°

Own	M. MERCER
Date	02 06 02
Chk	---
Mat'l	Extruded Aluminum
Sheet	1 of 2

HAMMOND MANUFACTURING CO. LTD. Electronics Group, Waterloo, Ont. - Cheektowaga, NY	HAMMOND 1455 SERIES EXTRUDED ALUMINUM	

NOTES

Constructed from extruded Al with a minimum thickness of 0.06"(1.5mm)
 Available in clear or Black anodized finish
 Version 1 includes two Al end panels, and two Black plastic bezels,
 Hardware and self-adhesive rubber feet included.



For the best fit print
on legal size paper.

THIS DRAWING IS PROPRIETARY INFORMATION
 OF HAMMOND MFG.CO.LTD. NOT TO BE USED
 WITHOUT EXPRESSED WRITTEN PERMISSION
 OF HAMMOND MFG.CO.LTD.

△	N/A	ADDED BEZELS AND PANELS TO DWG	----	02 06 02	MJM
△	N/A	RELEASE	----	01 15 02	MJM
Rev	ECN	Description		Date	By

Unless otherwise spec'd
 dimensions are in inches
 Tolerances are:
 X ± .1
 XX ± .04
 XXX ± .020
 XXXX ± .0050
 Holes ± .0050
 Angles ± .5°

Own	M, MERCER
Date	02 06 02
Chk	---
Mat'l	Extruded Aluminum
Sheet	2 of 1

HAMMOND MANUFACTURING CO, LTD,
 Electronics Group, Waterloo, Ont. - Cheektowago, NY

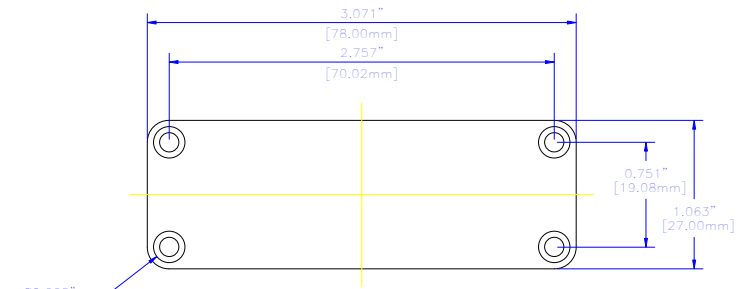
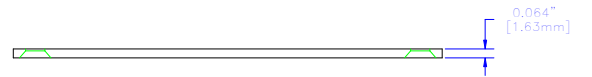
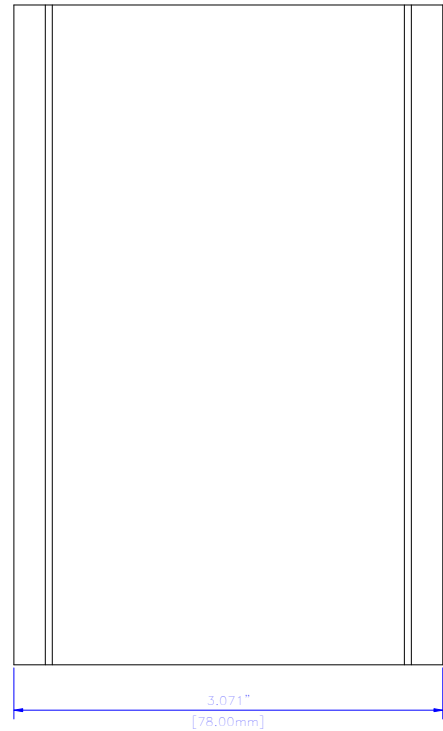
HAMMOND 1455 SERIES
 EXTRUDED ALUMINUM

Part#: 1455C1201

Dwg: 1455C1201B

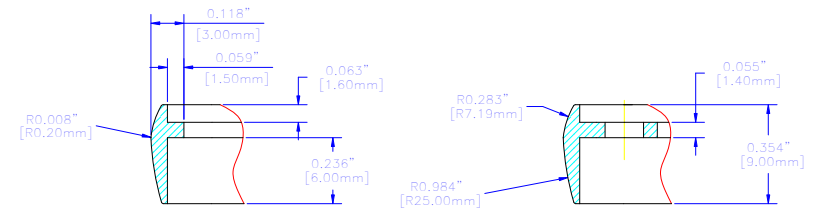
NOTES

Constructed from extruded Al with a minimum thickness of 0.060"(1.50mm)
 Available in clear or Black anodized finish
 Version 1 includes two Al end panels, and two Black plastic bezels.
 Hardware and self-adhesive rubber feet included.



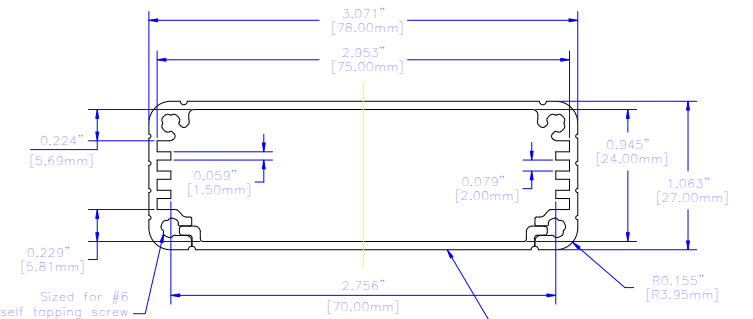
Ø0.225" [Ø5.72mm]
 82° Countersink
 #4 head,
 #6 screw

PANEL



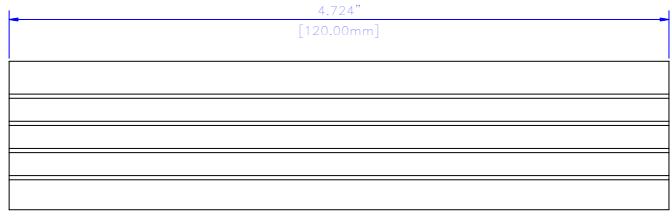
SECTION A-A
 SCALE 2:1

SECTION B-B
 SCALE 2:1

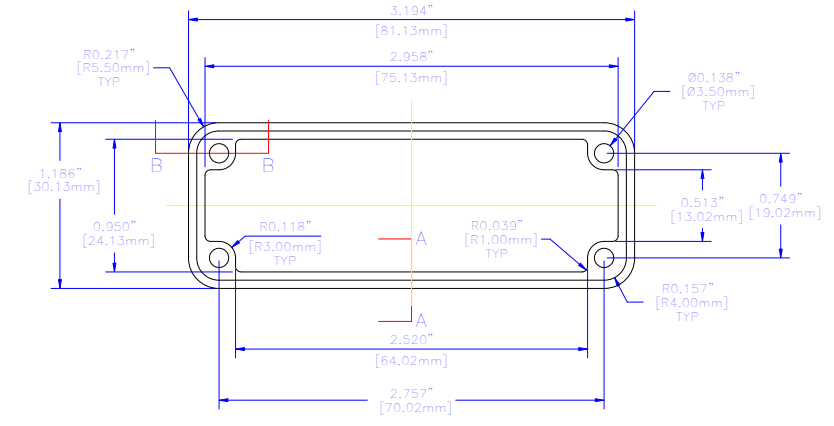


Base Plate is removable.

EXTRUSION



BEZEL



For the best fit print on legal size paper.

THIS DRAWING IS PROPRIETARY INFORMATION OF HAMMOND MFG.CO.LTD. NOT TO BE USED WITHOUT EXPRESSED WRITTEN PERMISSION OF HAMMOND MFG.CO.LTD.

Rev	EC	Description	Date	By

Unless otherwise spec'd dimensions are in inches
 Tolerances are:

.X	± .1
.XX	± .02
.XXX	± .010
.XXXX	± .0005
Holes	± .0050
Angles	± .5°

Dwn	T. SPARKS
Date	04 11 02
Chk	---
Mat'l	Extruded Aluminum
Sheet	1 of 2

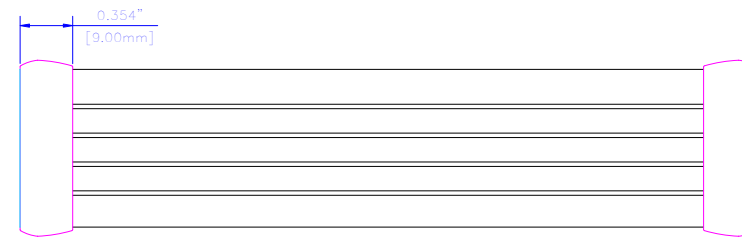
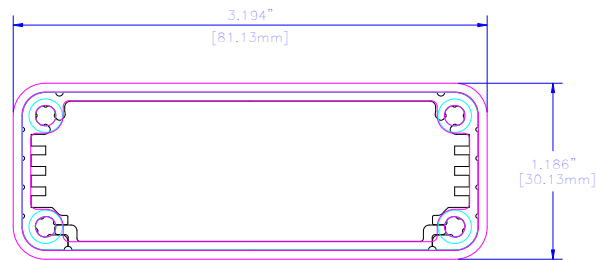
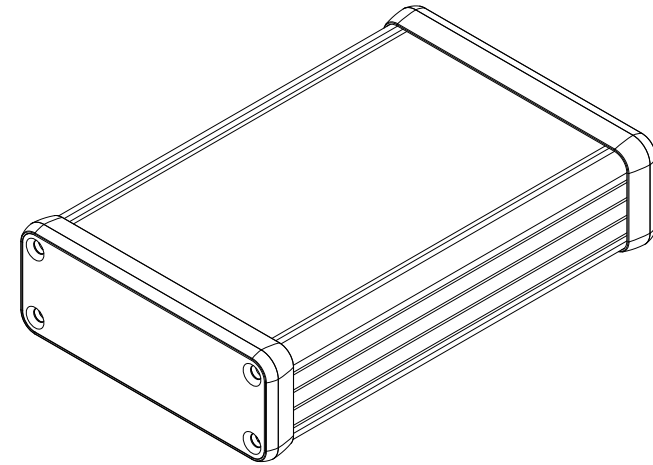
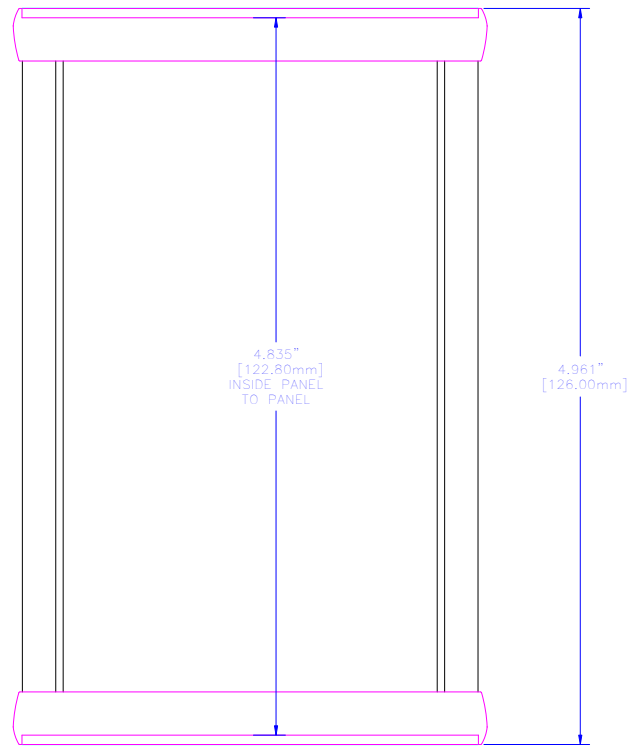
HAMMOND MANUFACTURING CO. LTD.
 Electronics Group, Waterloo, Ont. - Cheektowaga, NY

**HAMMOND 1455 SERIES
 EXTRUDED ALUMINUM**

Part #: 1455J1201 Dwg: 1455J1201/A

NOTES

Constructed from extruded Al with a minimum thickness of 0.060”(1.50mm)
 Available in clear or Black anodized finish
 Version 1 includes two Al end panels, and two Black plastic bezels.
 Hardware and self-adhesive rubber feet included.



For the best fit print on legal size paper.


ASSEMBLED

THIS DRAWING IS PROPRIETARY INFORMATION OF HAMMOND MFG.CO.LTD. NOT TO BE USED WITHOUT EXPRESSED WRITTEN PERMISSION OF HAMMOND MFG.CO.LTD.

Rev	EC	Description	Date	By

Unless otherwise specified dimensions are in inches
 Tolerances are:
 .X ± .1
 .XX ± .02
 .XXX ± .010
 .XXXX ± .0050
 Holes ± .005
 Angles ± .5°

Dwn	T. SPARKS
Date	04 11 02
Chk	---
Mat'l	Extruded Aluminum
Sheet	2 of 2

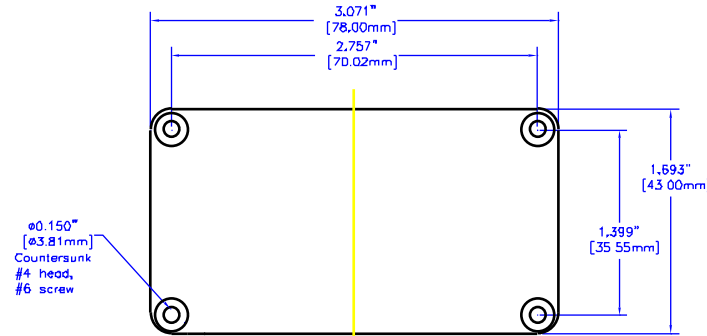
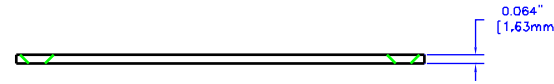
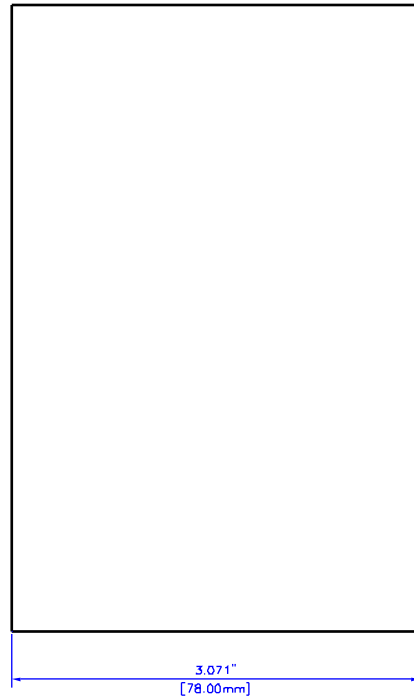

HAMMOND MANUFACTURING CO. LTD.
 Electronics Group, Waterloo, Ont. - Cheektowaga, NY

**HAMMOND 1455 SERIES
 EXTRUDED ALUMINUM**

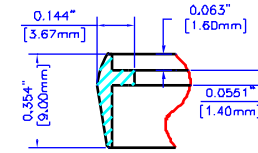
Part #: 1455J1201 Dwg: 1455J1201/A

NOTES

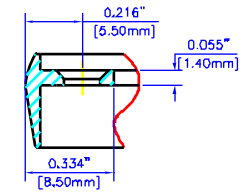
Constructed from extruded Al with a minimum thickness of 0.060"(1.50mm)
 Available in clear or Black anodized finish
 Version 1 includes two Al end panels, and two Black plastic bezels.
 Hardware and self-adhesive rubber feet included,



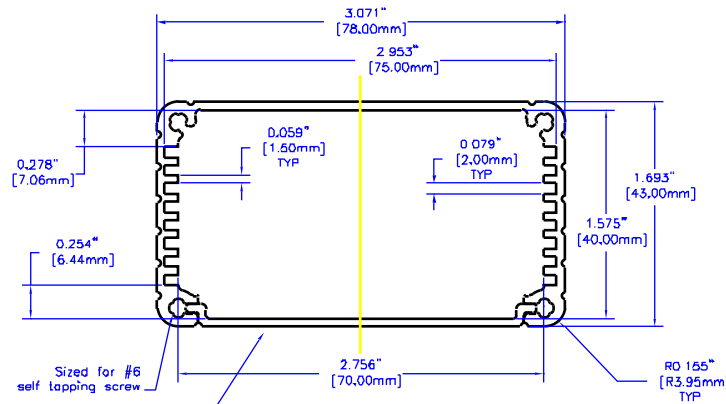
PANEL



SECTION A-A
SCALE 2:1

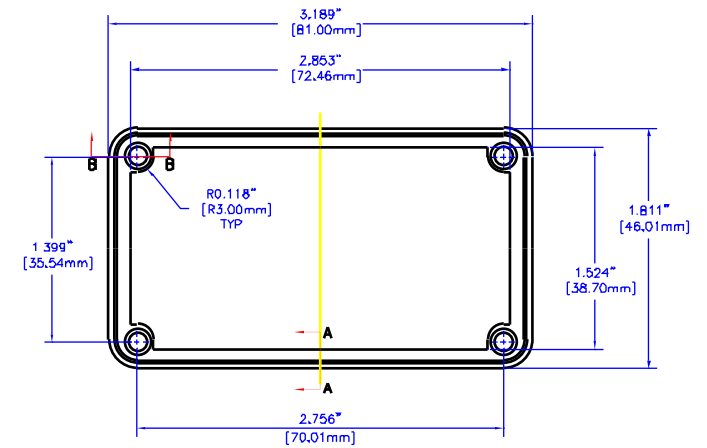
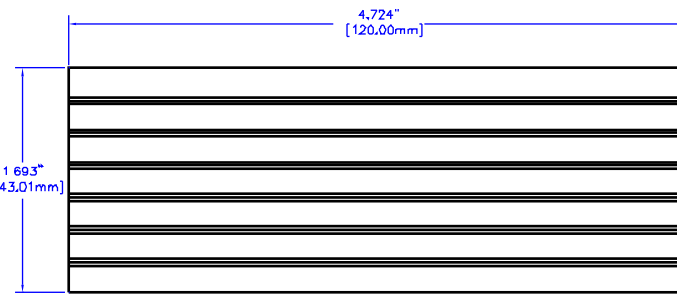


SECTION B-B
SCALE 2:1



Base Plate is removable.

EXTRUSION



BEZEL

For the best fit print on legal size paper.

THIS DRAWING IS PROPRIETARY INFORMATION OF HAMMOND MFG.CO.LTD. NOT TO BE USED WITHOUT EXPRESSED WRITTEN PERMISSION OF HAMMOND MFG.CO.LTD.

Rev	ECN	Description	Date	By
△	N/A	RELEASE	01 15 02	MJM

Unless otherwise specified dimensions are in inches
Tolerances are:

.X	± .1
.XX	± .02
.XXX	± .010
.XXXX	± .0005
Holes	± .0050
Angles	± 5°

Dwn	M. MERCER
Date	01 15 02
Chk	---
Mat'l	Extruded Aluminum
Sheet	1 of 2

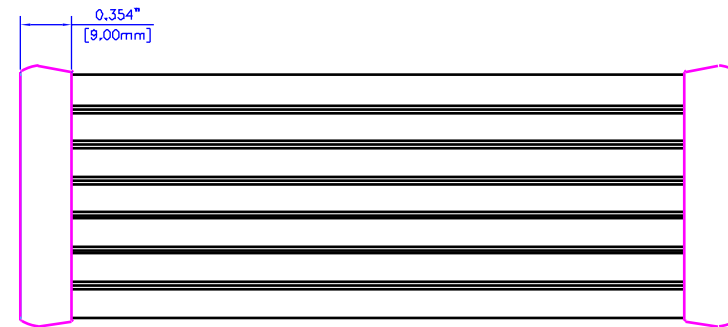
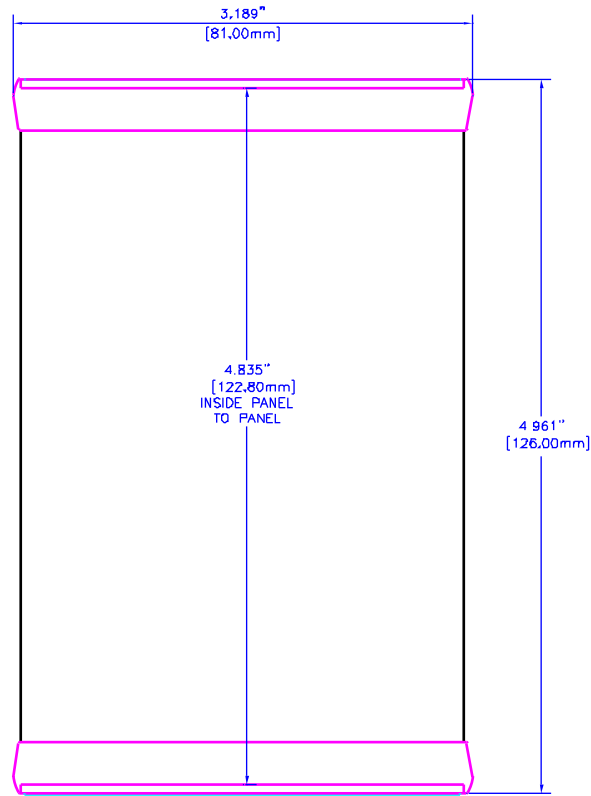
HAMMOND MANUFACTURING CO. LTD.
 Electronics Group, Waterloo, Ont. - Cheektowago, NY

HAMMOND 1455 SERIES
EXTRUDED ALUMINUM

Part#: 1455K1201 Dwg: 1455K1201A

NOTES

Constructed from extruded Al with a minimum thickness of 0.060"(1.50mm)
 Available in clear or Black anodized finish
 Version 1 includes two Al end panels, and two Black plastic bezels.
 Hardware and self-adhesive rubber feet included.



ASSEMBLED

For the best fit print on legal size paper.

THIS DRAWING IS PROPRIETARY INFORMATION OF HAMMOND MFG.CO.LTD. NOT TO BE USED WITHOUT EXPRESSED WRITTEN PERMISSION OF HAMMOND MFG.CO.LTD.

Rev	ECN	Description	Date	By
△	N/A	RELEASE	01 15 02	MJM

Unless otherwise spec'd dimensions are in inches
 Tolerances are:
 .X ± .1
 .XX ± .02
 .XXX ± .010
 .XXXX ± .0050
 Holes ± .005
 Angles ± .5

Dwn	M. MERCER
Date	01 15 02
Chk	---
Mat'l	Extruded Aluminum
Sheet	2 of 2

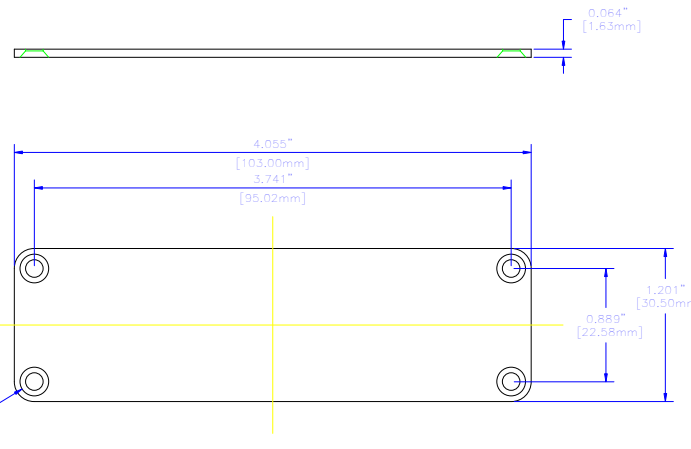
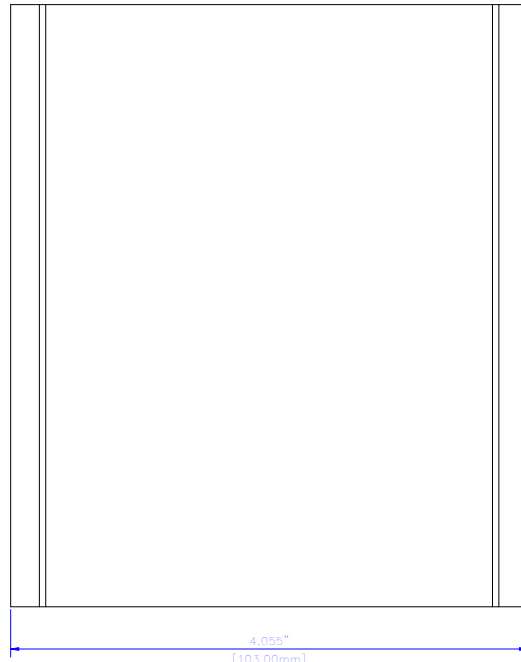
Hammond HAMMOND MANUFACTURING CO, LTD,
 Electronics Group, Waterloo, Ont. - Cheektowaga, NY

**HAMMOND 1455 SERIES
 EXTRUDED ALUMINUM**

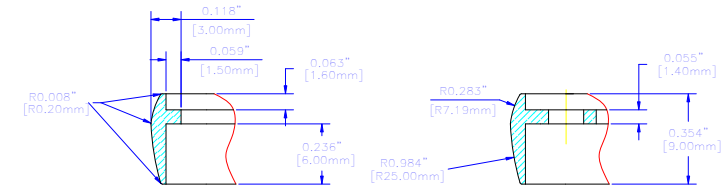
Part#: 1455K1201 Dwg: 1455K1201A

NOTES

Constructed from extruded Al with a minimum thickness of 0.060"(1.50mm)
 Available in clear or Black anodized finish
 Version 1 includes two Al end panels, and two Black plastic bezels.
 Hardware and self-adhesive rubber feet included.

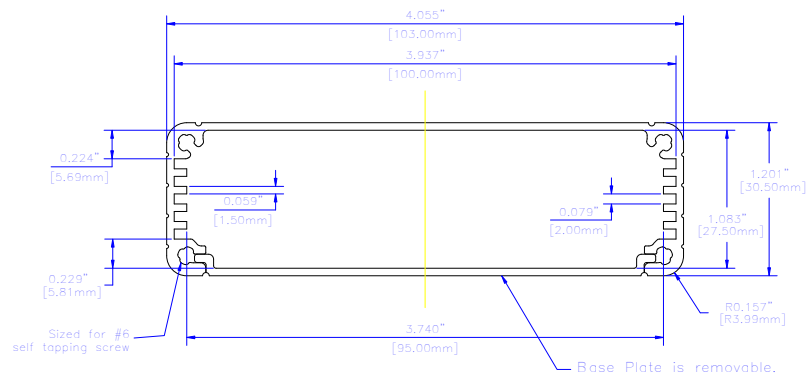


PANEL

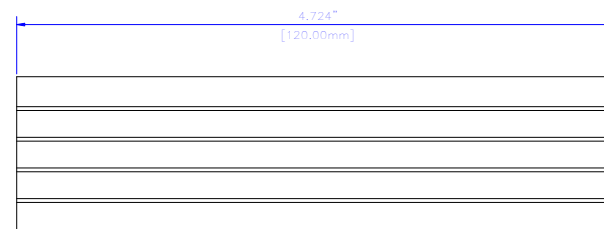


SECTION A-A
SCALE 2:1

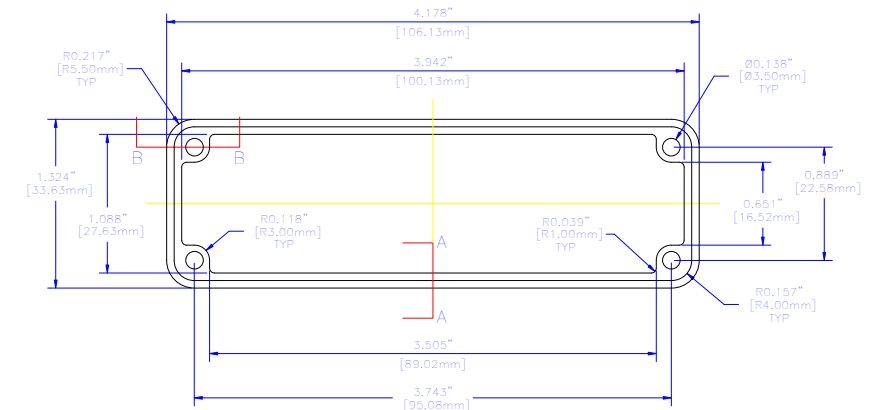
SECTION B-B
SCALE 2:1



EXTRUSION



BEZEL



For the best fit print on legal size paper.

THIS DRAWING IS PROPRIETARY INFORMATION OF HAMMOND MFG.CO.LTD. NOT TO BE USED WITHOUT EXPRESSED WRITTEN PERMISSION OF HAMMOND MFG.CO.LTD.

Rev	EC	Description	Date	By

Unless otherwise specified dimensions are in inches
 Tolerances are:
 .X ± .1
 .XX ± .02
 .XXX ± .010
 .XXXX ± .0005
 Holes ± .0050
 Angles ± .5°

Dwn	T. SPARKS
Date	04 11 02
Chk	---
Mat'l	Extruded Aluminum
Sheet	1 of 2

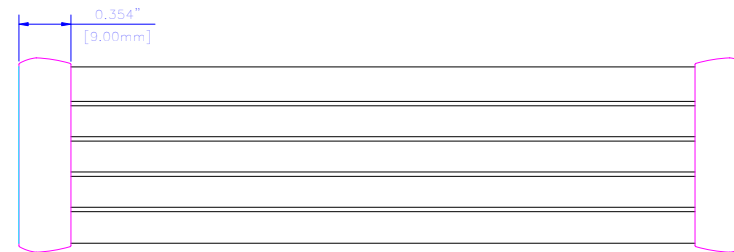
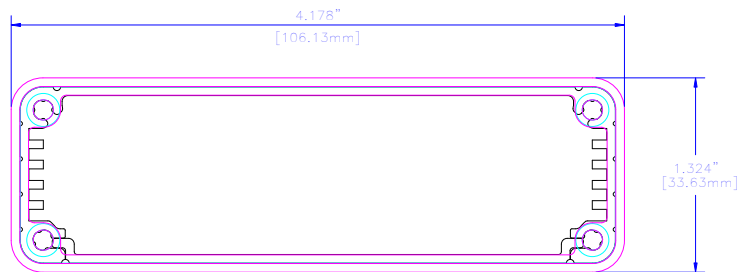
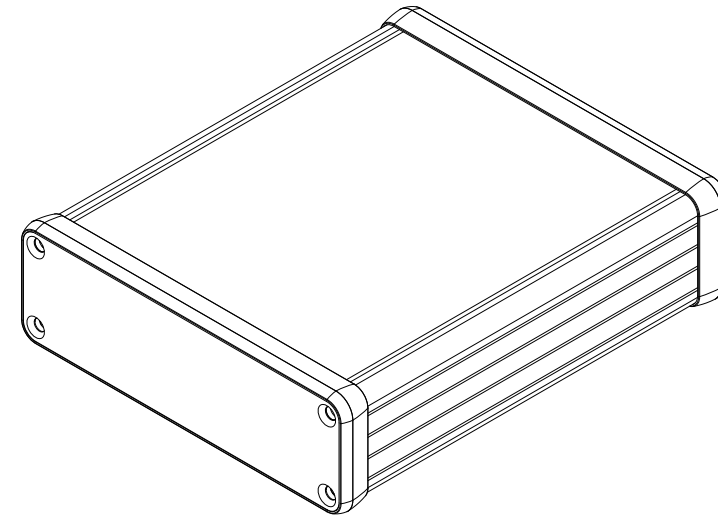
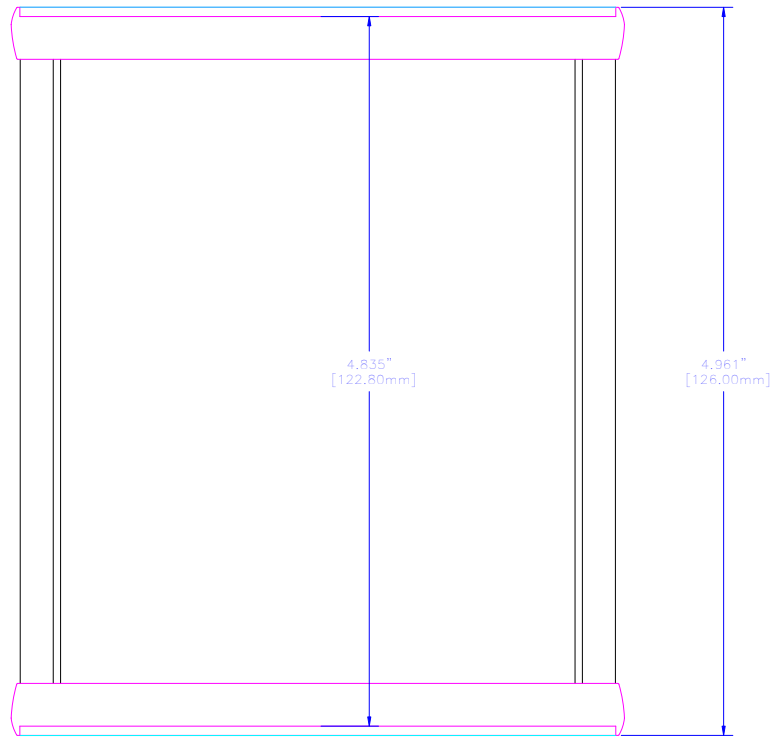
HAMMOND MANUFACTURING CO. LTD.
 Electronics Group, Waterloo, Ont. - Cheektowaga, NY

HAMMOND 1455 SERIES
 EXTRUDED ALUMINUM

Part #: 1455L1201 Dwg: 1455L1201/A

NOTES

Constructed from extruded Al with a minimum thickness of 0.060"(1.50mm)
 Available in clear or Black anodized finish
 Version 1 includes two Al end panels, and two Black plastic bezels.
 Hardware and self-adhesive rubber feet included.



For the best fit print on legal size paper.

ASSEMBLED

THIS DRAWING IS PROPRIETARY INFORMATION OF HAMMOND MFG.CO.LTD. NOT TO BE USED WITHOUT EXPRESSED WRITTEN PERMISSION OF HAMMOND MFG.CO.LTD.

Rev	EC	Description	Date	By

Unless otherwise specified dimensions are in inches
 Tolerances are:
 .X ± .1
 .XX ± .02
 .XXX ± .010
 .XXXX ± .0050
 Holes ± .005
 Angles ± .5°

Dwn	T. SPARKS
Date	04 11 02
Chk	---
Mat'l	Extruded Aluminum
Sheet	2 of 2

 HAMMOND MANUFACTURING CO. LTD.
 Electronics Group, Waterloo, Ont. - Cheektowaga, NY

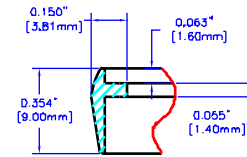
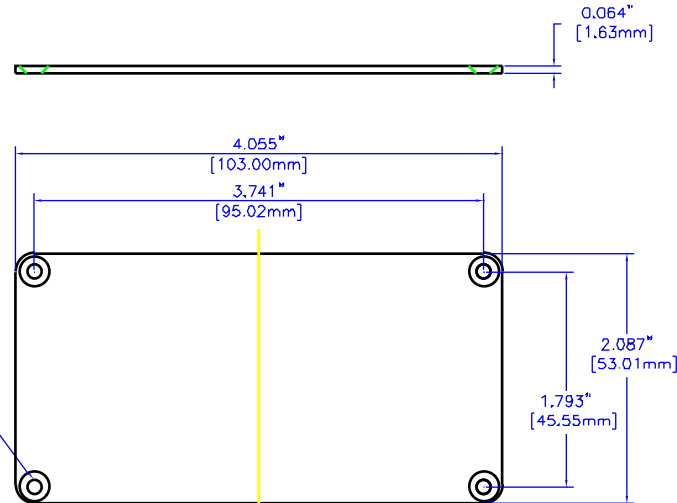
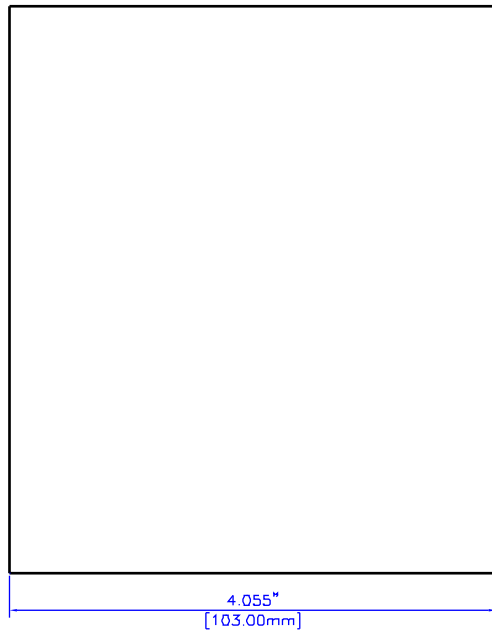
HAMMOND 1455 SERIES
 EXTRUDED ALUMINUM

Part #: 1455L1201 Dwg: 1455L1201/A

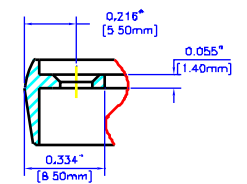


NOTES

Constructed from extruded Al with a minimum thickness of 0.060" (1.50mm)
 Available in clear or Black anodized finish
 Version 1 includes two Al end panels, and two Black plastic bezels.
 Hardware and self-adhesive rubber feet included.



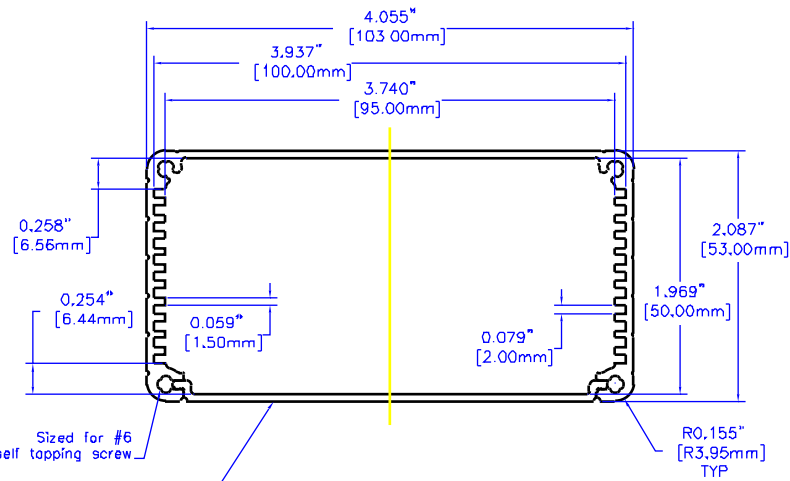
SECTION A-A
SCALE 2:1



SECTION B-B
SCALE 2:1

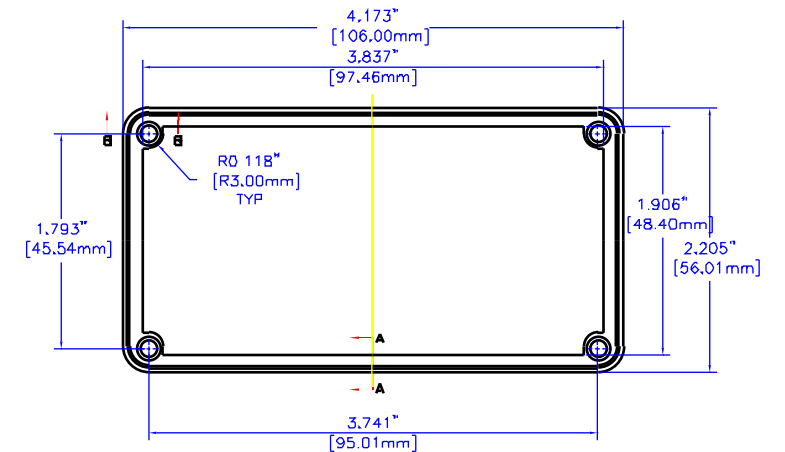
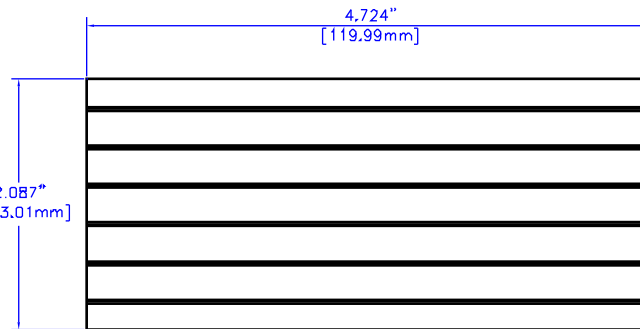
Ø0.150" [Ø3.81mm]
Countersunk #4 head, #6 screw

PANEL



Base Plate is removable.

EXTRUSION



BEZE

For the best fit print on legal size paper.

THIS DRAWING IS PROPRIETARY INFORMATION OF HAMMOND MFG.CO.LTD. NOT TO BE USED WITHOUT EXPRESSED WRITTEN PERMISSION OF HAMMOND MFG.CO.LTD.

Rev	ECN	Description	Date	By
△	N/A	RELEASE	01 15 02	NLM

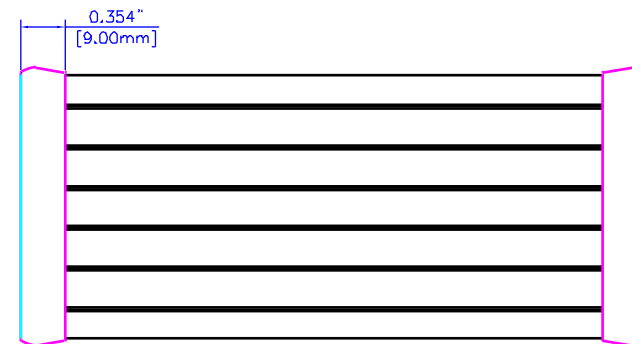
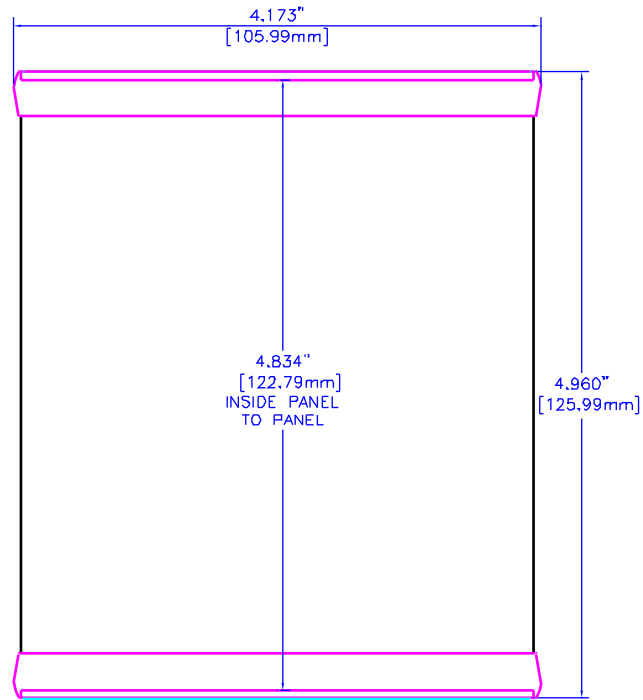
Unless otherwise spec'd dimensions are in inches
 Tolerances are:
 .X ± .1
 .XX ± .02
 .XXX ± .010
 .XXXX ± .005
 Holes ± .0050
 Angles ± .5°

Dwn	M. MERCER
Date	01 15 02
Chk	---
Mat'l	Extruded Aluminum
Sheet	1 of 2

HAMMOND MANUFACTURING CO., LTD.
 Electronics Group, Waterloo, Ont. - Cheektowaga, NY

HAMMOND 1455 SERIES
 EXTRUDED ALUMINUM

Part#: 1455N1201 Dwg: 1455N1201A



NOTES

Constructed from extruded Al with a minimum thickness of 0.060"(1.50mm)
Available in clear or Black anodized finish
Version 1 includes two Al end panels, and two Black plastic bezels.
Hardware and self-adhesive rubber feet included.

ASSEMBLE I

For the best fit print on legal size paper.

THIS DRAWING IS PROPRIETARY INFORMATION OF HAMMOND MFG.CO.LTD. NOT TO BE USED WITHOUT EXPRESSED WRITTEN PERMISSION OF HAMMOND MFG.CO.LTD.

△	N/A	RELEASE	----	01 15 02	MJM
Rev	ECN	Description		Date	By

Unless otherwise specified dimensions are in inches
Tolerances are:
.X ± .1
.XX ± .02
.XXX ± .010
.XXXX ± .0050
Holes ± .005
Angles ± .5°



Dwn	M MERCER
Date	01 15 02
Chk	---
Mat'l	Extruded Aluminum
Sheet	2 of 2

HM HAMMOND MANUFACTURING CO. LTD.
LU Electronics Group, Waterloo, Ont. - Cheekawaga, NY

**HAMMOND 1455 SERIES
EXTRUDED ALUMINUM**

Part #: 1455N1201 Dwg: 1455N1201A